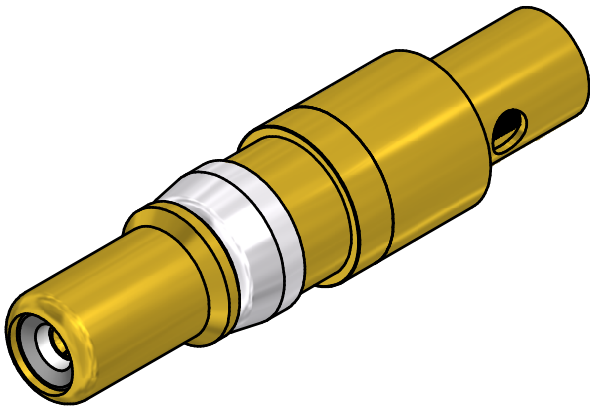
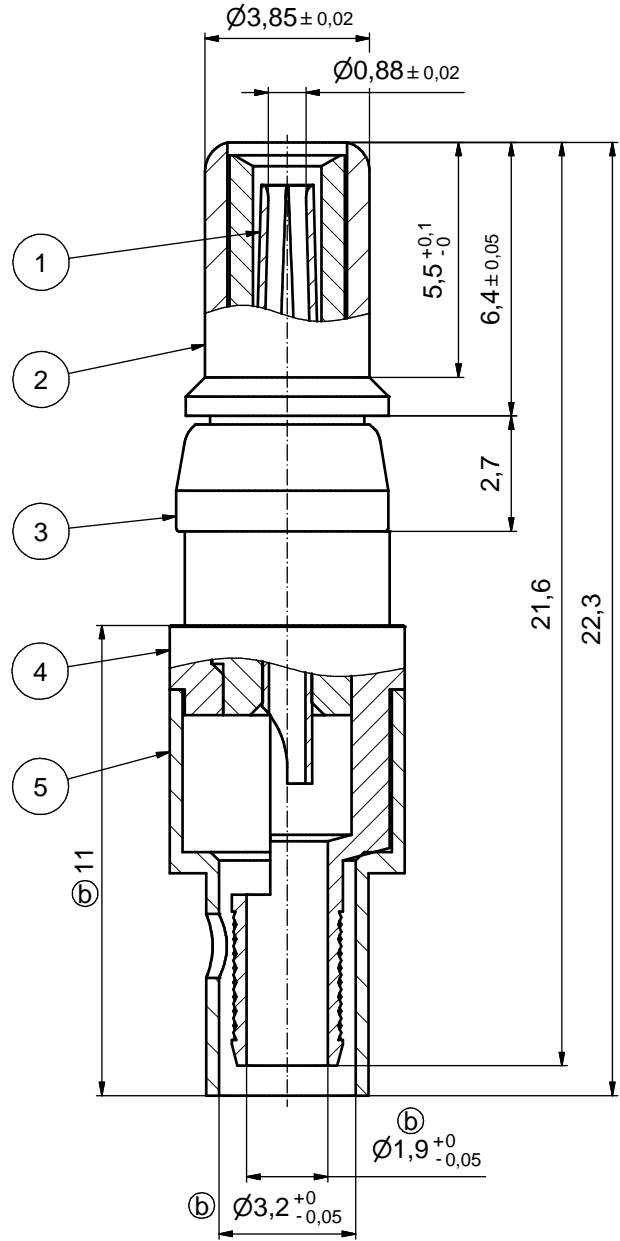
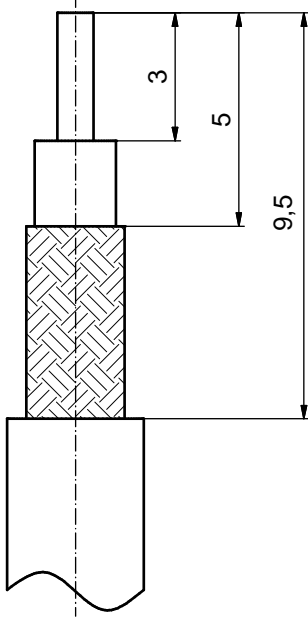


⑥ STRIPPING DIMENSIONS



⑥ **ASSEMBLY TOOLING:**

1. CENTER CONTACT:
SOLDERED
2. OUTER CONDUCTOR:
SOLDERED OR CRIMPED
USE CRIMP TOOL: 360X10519X
WITH TOOL INSERT: 360X11019X
INSERT CAVITY B: HEX 3.25 / .128"

⑥

Part no.	Finish Pos.1	Finish Pos.2	Finish Pos.3	Finish Pos. 4/5
131J20029X	50µin HARD GOLD over min. 50µin NICKEL	30µin HARD GOLD over min. 50µin NICKEL	NICKEL PLATED	GOLD FLASH over NICKEL
131A20029X	GOLD FLASH over NICKEL	GOLD FLASH over NICKEL	NICKEL PLATED	GOLD FLASH over NICKEL

THIS DRAWING MAY NOT BE COPIED OR REPRODUCED IN ANY WAY, AND MAY NOT BE PASSED ON TO A THIRD PARTY WITHOUT WRITTEN PERMISSION. OWNERSHIP AND COPYRIGHT OF CONEC GmbH DO NOT ALTER CAD DRAWING BY HAND	tolerance		dim. in mm		scale: 8:1
					material: COPPER ALLOY (Pos. 1-5)
	drawn	29.08.05	Lehmenkühler		title: COAXIAL CONTACT PLUG 50 OHM inner conductor for solder termination outer conductor for solder or crimp termination
	appd.	30.08.05	Mickenbecker		
	norm				
d-old				dwg no:	
6 x b	Ä4538	16.11.12	Lehmen	DIN-A3	
a	Original			sh: 1	
rev.	description	date	name	part no: see table	

Directive 2002/95/EC RoHS compliant

CONEC